



ABN 41 004 669 658

G1 49 Melville Parade  
South Perth WA 6151, Australia

PO Box 307  
West Perth WA 6872, Australia

T 61 8 9474 2113  
F 61 8 9367 9386

E info@randmining.com.au  
W randmining.com.au

The Listing Manager  
Australian Securities Exchange  
Level 4  
20 Bridge Street  
SYDNEY NSW 2000

12 March 2015

### Monthly Production Report for February 2015

Rand Mining Ltd, advises the following for the month of February 2015:

- 1,934.717 oz of gold and 403.869 oz of silver were credited to Rand's Bullion Account from processing EKJV ore
- 67,749 tonnes of EKJV ore were milled at Kanowna Belle
- Mine production of 52,900 tonnes at an average grade of 6.8 g/t.

Processing of EKJV ore at Kanowna Belle	
Month	Provisional Feb 2015
Ore processed	67,749
Grade	7.8
Recovery	96.2
Gold recovered (oz)	16,334
Silver recovered (oz)	3,374
<b>Rand's share of gold</b>	<b>2,008</b>

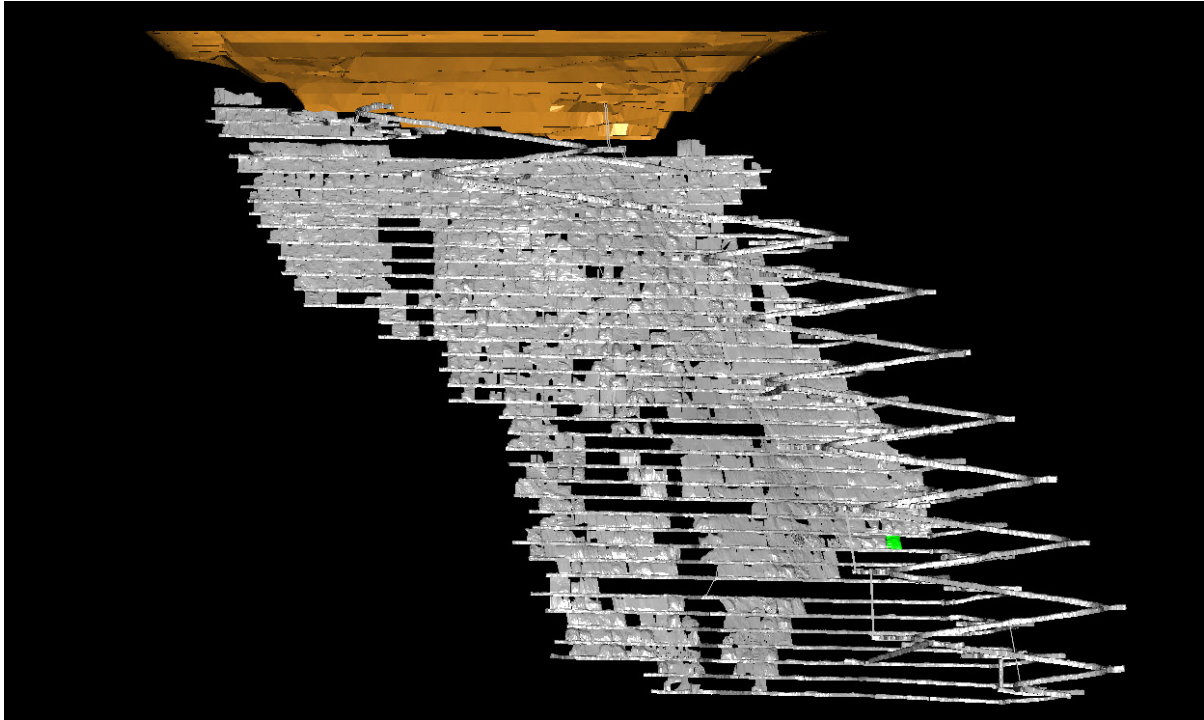
MINE CLAIMED PRODUCTION					
		Raleigh	Rubicon & Hornet	Pegasus	Total
Ore	t	4,664	35,161	13,075	52,900
Grade	g/t Au	8.8	7.8	3.2	6.8
Gold	oz	1,333	8,877	1,374	11,584
<b>Rand's Entitlement</b>	oz	<b>166</b>	<b>1,087</b>	<b>168</b>	<b>1,422</b>
	%	12.50	12.25	12.25	

MINE OPERATING COSTS				
Unit Cost*	Raleigh	Rubicon & Hornet	Pegasus	Total
\$/t ore	106	101	31	84
\$/oz gold	371	401	298	385

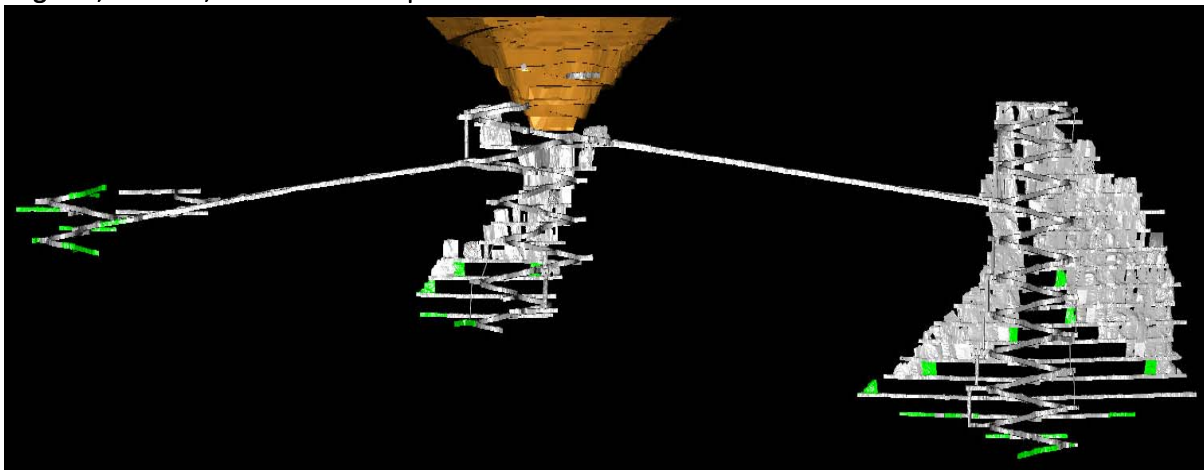
\* based on Mine Claimed Production

### End of Month Status

#### Raleigh – Production



#### Pegasus, Rubicon, Hornet – Development and Production



(Note: green indicates new developments)

MINE DEVELOPMENT						
			Raleigh	Rubicon &Hornet	Pegasus	Total
Capital	Decline	m	-	109.9	141.8	251.7
	Secondary	m	-	6.0	119.4	125.4
Operating	Waste	m	-	-	-	-
	Ore	m	18.4	244.9	145.8	409.1
	Paste Fill	m	6.0	54.0	0.0	60.0

END OF MONTH POSITION			
		RL (m)	below surface (m)
Raleigh Decline	bottom	5618	727
Rubicon Decline	bottom	5999	344
Hornet Incline	top	6244	99
Hornet Decline	bottom	5861	482
Pegasus Incline	top	6155	188
Pegasus Decline	bottom	6083	260

END OF MONTH EKJV STOCKPILES ESTIMATES			
ROM pad	Ore Source	Ore	Grade
		t	g/t Au
Raleigh	Raleigh	4,380	8.5
Rubicon	Rubicon & Hornet	6,445	8.6
Pegasus	Pegasus	5,681	4.7
Kanowna Belle	Raleigh	-	-
Kanowna Belle	Rubicon & Hornet	37,958	7.9
Kanowna Belle	Pegasus	7,268	2.9

For further information please contact:

Roland Berzins

E: rberzins@gccpcapital.com.au

Ph: +61 8 9474 2113